



09  
45

# newline

CONNECT. CREATE. COLLABORATE.

2025 Higher  
Education Catalog







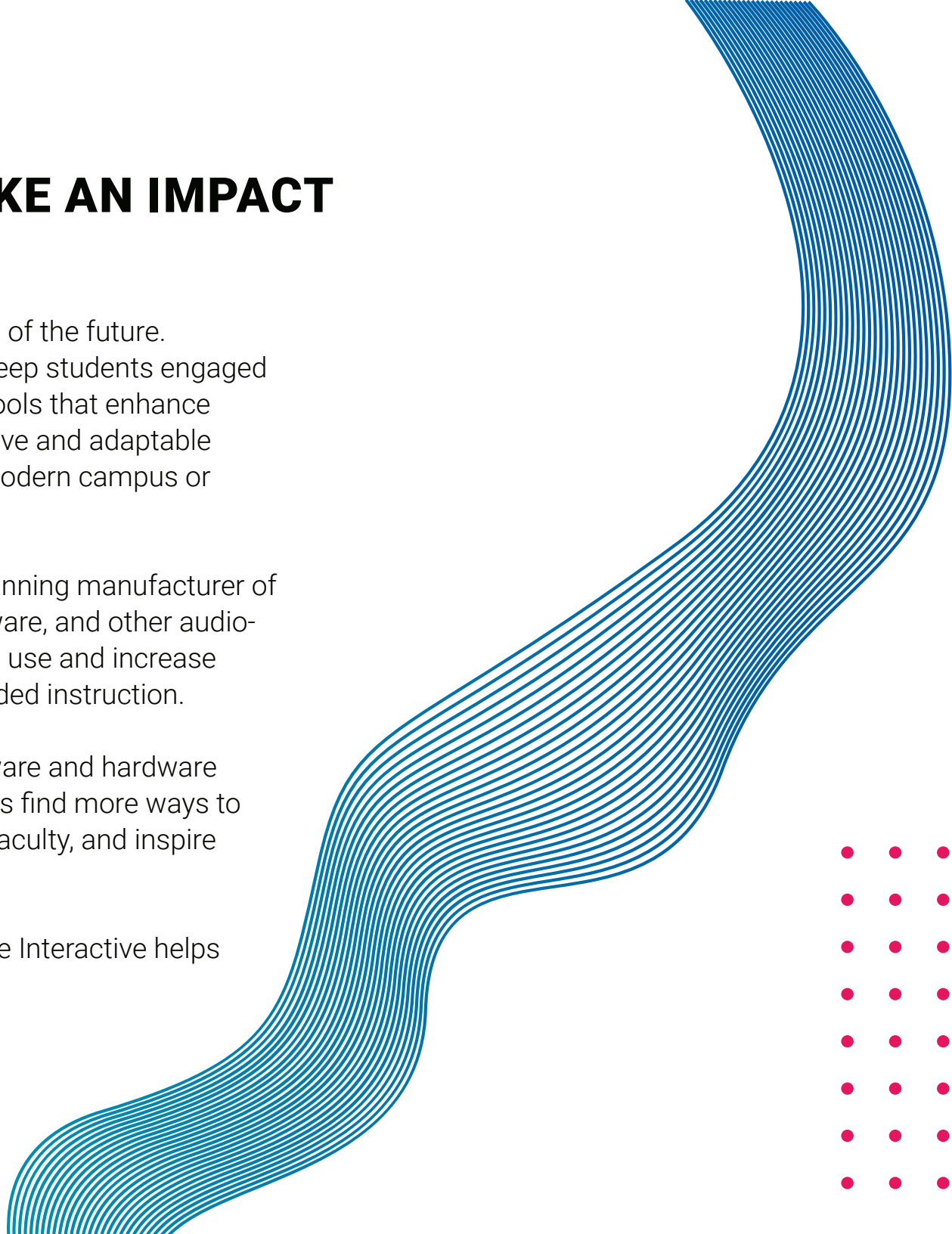
# WE HELP YOU **MAKE AN IMPACT** ON CAMPUS

Newline creates the campus tools of the future. From interactive flat panels that keep students engaged throughout the lecture, to digital tools that enhance learning, Newline creates a cohesive and adaptable technology environment for the modern campus or classroom.

Newline Interactive is an award-winning manufacturer of interactive displays, intuitive software, and other audio-visual innovations that are easy to use and increase content retention in technology aided instruction.

We are a leading provider of software and hardware that helps colleges and universities find more ways to engage their students, train their faculty, and inspire more active learning.

It is your passion to teach. Newline Interactive helps enhance the delivery.





# TRANSFORM YOUR CAMPUS

*Newline is a one-stop shop for colleges and universities. Our all-in-one solutions and accessories give you all the innovative tools you need.*

Newline focuses on creating products that keep your campus running more effectively. From our award-winning and easy-to-use interactive touch panels to our comprehensive lineup of cutting-edge LED display solutions and wide range of software, Newline has everything you need to bring success into your college or university.

## Easy for Anyone to Use

If a solution isn't easy to use, we won't bring it to the market. All of our products are designed with you in mind and it is the key to our success.

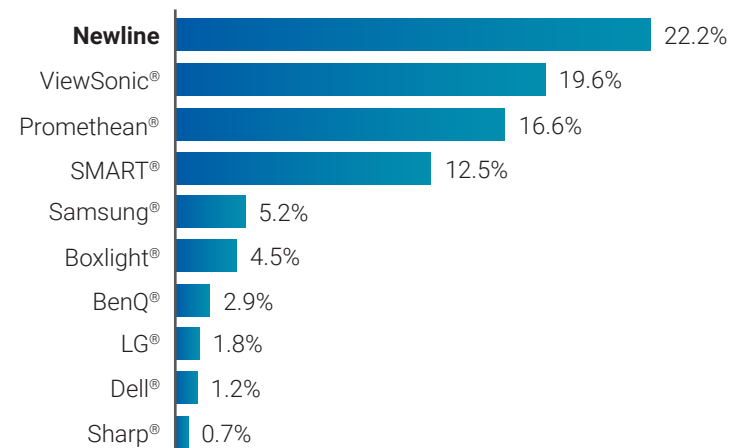
## Completely Non-Proprietary

We work in your world. No matter what software or hardware you want to use, our solutions give you the freedom to collaborate how you choose.

## Newline is Number 1!

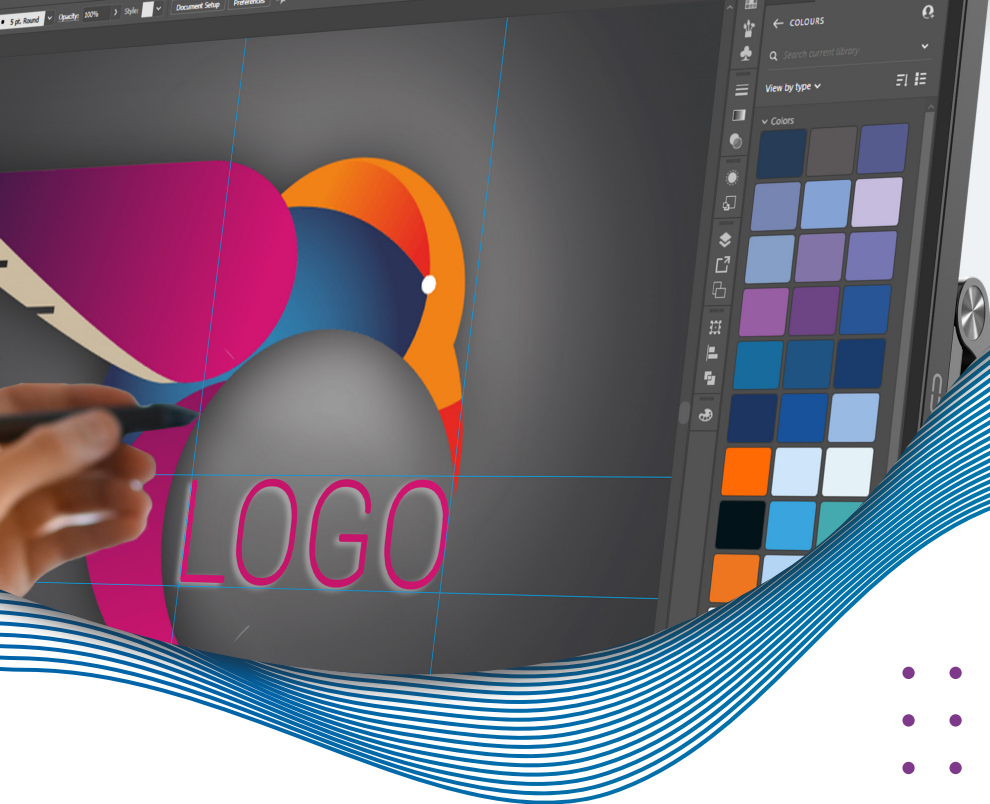
Newline is the largest manufacturer of interactive displays in the United States. Our business model keeps us growing like none other.

### 2024 Q3 USA Market Share



\* Data provided by 2024 Futuresource Consulting Ltd





***"We Help Your School  
Make an Impact"***

## **We Own the Factory**

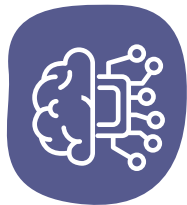
Newline has complete control over product improvements and how much is produced. We listen to our clients and their needs to make sure the products we provide help them succeed.



## **Well-Stocked Local Warehouses**

With warehouses in strategic places across the country, Newline gets displays to their destination faster than ever with same and next day shipping. You'll never have to worry about if Newline can fill an order.

# Newline + Merlyn AI



## Leverage the Power of Generative AI

Leverage the power of Merlyn's generative AI during instruction to deliver text and images that rewards student curiosity and makes students of all ages excited about learning.



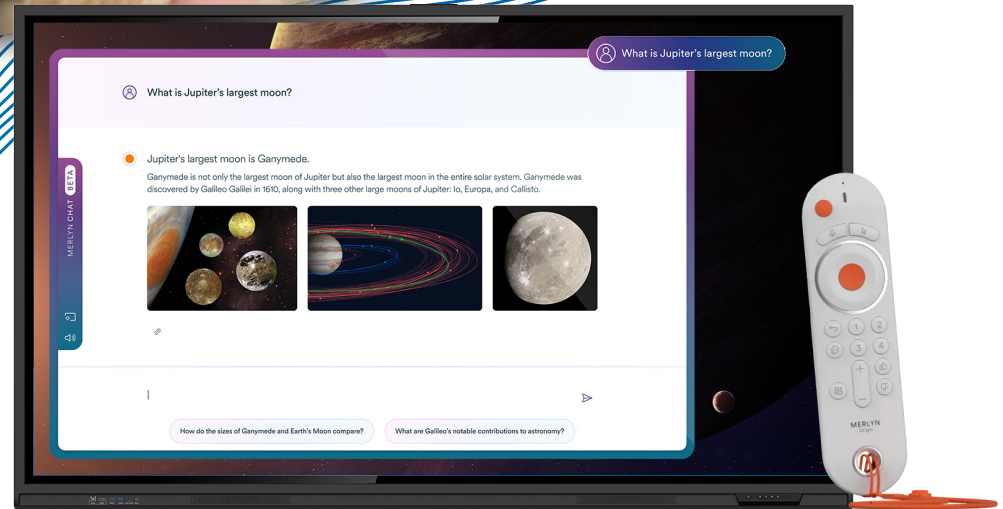
## Control with Your Voice

Using the power of Merlyn AI and natural language voice commands, users can access all of the Newline features they know and love from anywhere in the room.



## Safe, Secure and Private

Merlyn AI is built on the first LLM designed specifically for education, so you can be confident content is pulled from vetted educational content and resources, not off the internet.



With the power of Merlyn AI, Newline's interactive panels are easier to use than ever! The Newline Q and Q Pro Series interactive panels with Merlyn AI allows users to control their panels with only their voice and leverage the power of generative AI to deliver text and images to the panel as if by magic.



Leverage the Power of  
Generative AI



Integrated with the  
Q Pro & Q Series



Control With  
Your Voice



LLM Sourced from  
Vetted Content



Private,  
Safe & Secure



Highly Versatile  
AI assistant

## Product Part Numbers

55" Q Pro Bundle - TT-5524QP-AI1  
65" Q Pro Bundle - TT-6524QP-AI1  
75" Q Pro Bundle - TT-7524QP-AI1

86" Q Pro Bundle - TT-8624QP-AI1  
98" Q Pro Bundle - TT-9824QP-AI1

1 year subscription - MER-AI-1  
3 year subscription - MER-AI-3  
5 year subscription - MER-AI-5



# Q Pro Series



Inspire students to actively engage in learning with the Newline Q Pro Series, a high-performance interactive display solution with native Google EDLA Certification. Seamless integration with Google Apps enhances instruction by providing easy access to Google Classroom, Google Drive, and other Google applications.

## Certified Google Integration

Google EDLA certification ensures compatibility and optimal performance with Google applications and services.



## Powerful Android 13 OS

Powered by the latest and most advanced Android 13 operating system, the Q Pro Series is highly customizable, allowing for tailored user profiles.



Google EDLA  
Certified



USB Type-C  
with 65W Power



Android 13 OS  
with User Profiles



Camera Module  
Capable



Better Connectivity  
with Wi-Fi 6



Embedded  
20W Speakers



Up to 40  
Points of Touch



Compatible with  
All Devices

## Product Part Numbers

55" - TT-5524QPRO    65" - TT-6524QPRO    75" - TT-7524QPRO  
86" - TT-8624QPRO    98" - TT-9824QPRO

## Up to 40 Points of Touch

The Q Pro supports up to 40 points of touch and Object Recognition that can differentiate between fingers, pens and palms to react as a marker, thin pen or eraser.





### Built-in Mic Array

An integrated 8-microphone array with automatic gain control and echo canceling technology ensures a crisp clear voice transmission from anywhere in the room.



### Modular Camera

The UC Ready Z Pro Series comes with a modular 4K camera with a wide-angle Field Of View, AI Auto-Framing and tiltable design, so you will always be at the center of the presentation from anywhere in the room.



### SDM-S & OPS Expansion Slot

Plug in an SDM-S or OPS type peripheral for easy expansion and flexible integration with Windows OS or Linux OS.

**NEW!** The Newline Z Pro Series, a high performance interactive solution, empowers faculty with truly effortless collaboration to meet their student's demands. The UC Ready Z Series comes with an onboard computer (OPS) and a flexible 4K AI camera. Don't need an OPS or camera? Choose the non-UC Z Series and save.



Google EDLA  
Certified



USB Type-C  
with up to 100W Power



Android 13 OS  
with User Profiles



4K Wide-Angle AI  
Camera (Optional)



Better Connectivity  
with Wi-Fi 6



Immersive  
4K UHD Display



Superior Capacitive  
Touch (P-CAP)



Compatible with  
All Devices

### Product Part Numbers

55" - TT-5524ZPRO  
TT-5524ZPRO-UC

65" - TT-6524ZPRO  
TT-6524ZPRO-UC

75" - TT-7524ZPRO  
TT-7524ZPRO-UC

86" - TT-8624ZPRO  
TT-8624ZPRO-UC



# C Series



Introducing the Newline C Series, a versatile and cost-effective interactive display is designed to be user-friendly and adaptable, making it a perfect tool for engagement and collaboration. The C Series seamlessly integrates with your pre-existing technology, including your favorite hardware and software, maintaining the quality, reliability, and flexibility you've come to expect from Newline.



No  
On-board OS



Ultra Bright  
Display



4K UHD  
Resolution



Up to 40 Points  
of Touch



OPS  
Capable



Plug & Play  
Design



Variety of  
Connections



Compatible with  
all Devices

## Product Part Numbers

65" - TT-6523C

75" - TT-7523C

86" - TT-8623C

## No On-Board OS

With no on-board operating system, you can interact in your favorite software ecosystem and never worry about management or security settings.



## OPS Compatible

All C Series interactive touch panels come with an easy to access OPS port. Add a powerful on-board computer module to bring the power of a desktop right to your display.

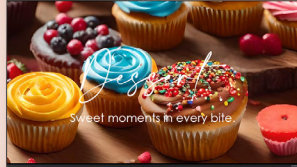


## Compatible with all Devices

Seamlessly connect with all your devices effortlessly, the C Series is designed to be compatible with a wide range of devices.

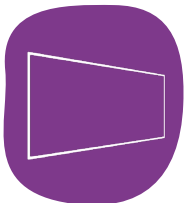


# STV+ Series



## IP Control

Control your STV+ with IP commands and Wake-on-Lan, along with free display management software in Newline NDM+



## 1mm Ultra-thin Bezel

STV+'s incredibly slim 1.2mm bezel and high screen display ratio deliver immersive visuals that break free from traditional boundaries for an extraordinary viewing experience.



## Digital Signage Compatible

Effortlessly broadcast to every display in your organization with built-in Newline VCS, meeting all your digital signage and visual communication needs.

**NEW!** Presenting the newly updated STV+ Series, Newline's pioneering Pro Series TV. Available in sizes ranging from 43" to 98", the STV+ seamlessly integrates into any space in your school or business, adapting to diverse functions and requirements. Exciting new features on the STV+ include 24/7 continuous run time, RS232 and IP Control, and Wake on LAN capabilities, offering enhanced reliability and seamless remote management.



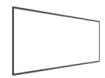
High Performance  
Pro Series TV



4K UHD &  
Pure Color



24/7  
Operation Time



Ultra-thin  
1.2mm Bezel



IP  
Control



Digital Signage  
Compatible



Enhanced  
Android 14 OS



Available in  
sizes 43" - 98"

## Product Part Numbers

43" - STV-4324-PLUS    65" - STV-6524-PLUS    85" - STV-8524-PLUS  
55" - STV-5524-PLUS    75" - STV-7524-PLUS    98" - STV-9824-PLUS



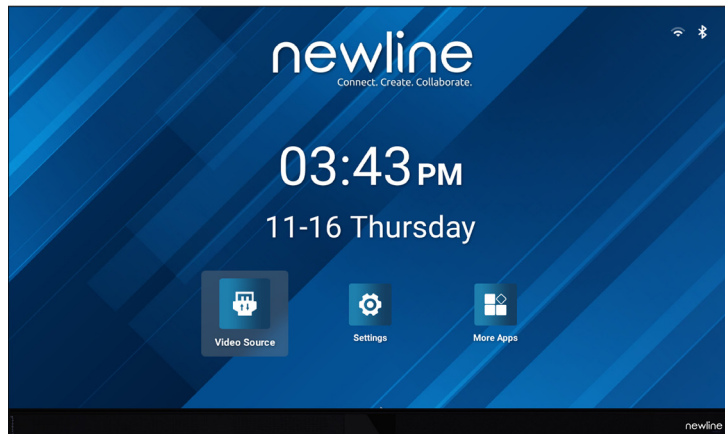


# DV *SERIES*

## Discover the lineup of Newline's Direct View LED Solutions

The Newline DV Series presents a comprehensive lineup of cutting-edge LED display solutions designed to redefine visual experiences. From the DV One with its sleek, all-in-one design, to the DV Element boasting stunning 10000 nits of brightness for outdoor settings, each product in the lineup offers unmatched performance and versatility. With innovative technologies and stylish designs, the Newline DV Series caters to a diverse range of applications, ensuring immersive and impactful visual presentations in any setting.

### DV ONE

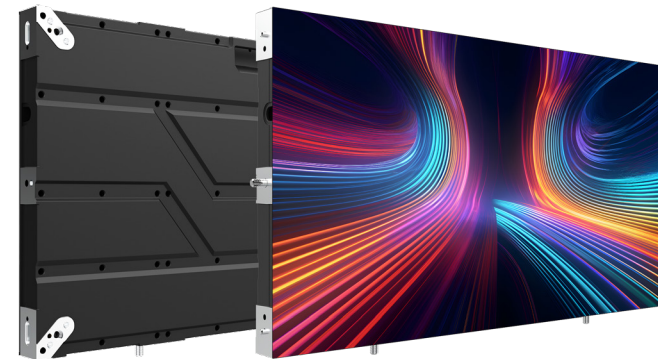


The Newline DV One is an exceptional All-in-One Direct View LED display that combines cutting-edge technology with seamless design. Available in sizes 120", 150" and 180" to provide the ultimate large-scale viewing experience, the DV One adopts a lightweight design with a sleek bezel-less display area with a 19.8mm cabinet mounted to a 6mm ultra-thin frame.

#### Product Part Numbers

120" - DV-12023HD    150" - DV-15023HD    180" - DV-18023HD

### DV PRO



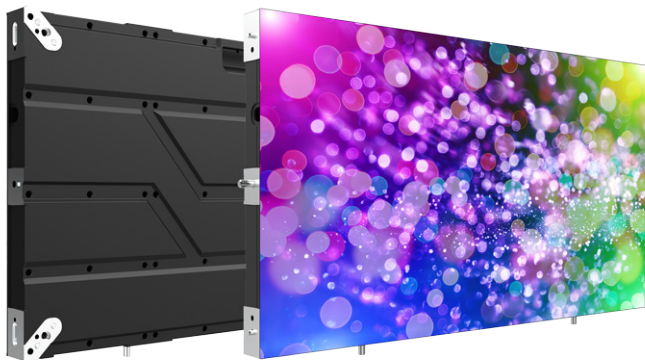
**NEW!** The DV Pro LED Solution represents a breakthrough in display technology, combining unparalleled durability with stunning visual performance in an affordable package. Utilizing a cutting-edge glue on board (GOB) construction, this series offers exceptional reliability, making it ideal for a wide range of applications including indoor advertising, conference rooms, controls rooms and more.

#### Pixel Pitch

1.25 mm    1.875 mm    1.5625 mm    2.5 mm



## DV PREMIER



**NEW!** The Newline DV Premier LED Solution stands as a pinnacle of innovation and versatility in the realm of visual technology. Equipped with high-quality MIP (MicroLED In Package and MiniLED In Package) modules, it ensures exceptional brightness and color accuracy, making it ideal for a wide range of indoor applications including broadcast studios, control rooms, and conference centers.

### Pixel Pitch

0.625 mm    0.9375 mm    1.25 mm    1.5625 mm

## DV ELEMENT



**NEW!** The DV Element is Newline's first LED solution for outdoor use. Engineered with high-quality LED modules that offers up to 10,000nits of customized brightness and designed to withstand a variety of weather conditions, the DV Element ensures brilliant illumination and vibrant colors, even in direct sunlight, making it perfect for outdoor advertising, sports arenas, and large-scale events.

### Pixel Pitch

6.67 mm    8 mm    10 mm

# FLEX



## Plug & Play Design

BYOD! Plug in your laptop with just one cable and activate touch functionality. Students can start on projects instantly and so can your lessons.



## Tilt & Turn 4K Camera

Better illustrate a lesson point with the high-quality camera or use it as a quick document camera.



## Capacitive Touch

Accurate P-CAP touch and intuitive response makes it easy to use for small children and adults!

Meet your new remote learning assistant! Newline FLEX is a versatile all-in-one touch monitor designed for desktop collaboration. Use the Newline FLEX to eliminate desk clutter from cables and peripheral devices, by plugging up to your laptop and getting to work. Connect with your students from your desk and take notes right on your desktop screen.

27"

27" All-in-One  
Appliance



Powered USB  
Type-C w/ 60W



8 Mic Array &  
Echo  
Cancellation



Active Pen  
w/ Palm  
Rejection



2.1 Channel  
Speakers

**Product Part Numbers**

FLEX



# CAMERAS & MICROPHONES

## Stay Connected to Your Students

Be Hyflex Model ready in a flash by adding a camera to any Newline display. Expand your Newline ecosystem with the Modular 4K Camera, Modular Mic Array, or Document Camera. An easy-to-install camera instantly prepares you for your impromptu video lessons, project presentations, or immersive lessons. Save yourself from countless hours of research on “the best edtech camera.” The best options for your Newline display are right here! Discover the perfect fit for your classrooms:



**MODULAR  
MIC ARRAY**

- ✓ Connect via bluetooth & USB
- ✓ Noise Reduction
- ✓ Echo cancellation
- ✓ 360° bluetooth microphone - place anywhere in the room
- ✓ Ultra Portable Compact Design
- ✓ Plug & Play Design



Bluetooth/USB  
Connection



360°  
Microphone



**DOCUMENT  
CAMERA**

- ✓ 4K camera
- ✓ Auto-Focus Lens
- ✓ Connect via USB Type-C
- ✓ Flexible multi-jointed design
- ✓ Adjustable LED Light
- ✓ Works with all Newline displays



4K  
Camera



Flexible  
Shooting Area



**4K MODCAM+**

- ✓ 4K camera
- ✓ Built-In ANR/AGC Mic
- ✓ Built-In AI Auto Framing
- ✓ Connect via USB
- ✓ Control by Remote
- ✓ Works with Q & Z Series displays



4K  
Camera



Plug &  
Play Design

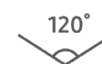


**TANGO**

- ✓ 1080p HD camera
- ✓ Integrated microphone
- ✓ Connect via USB
- ✓ 120° camera field-of-view
- ✓ Digital noise reduction
- ✓ Works with all Newline displays



1080p  
Camera



120° Field  
of View



**MEET CAM**

- ✓ 4K camera
- ✓ Auto framing
- ✓ 120° camera field-of-view
- ✓ Connect via bluetooth & USB
- ✓ 360° bluetooth microphone - place anywhere in the room
- ✓ Echo cancellation



4K  
Camera



360°  
Microphone

# ON-BOARD COMPUTERS

## Plug & Play Computers for Your Display

Support your campus and classrooms with computers that make teaching easier and learning more engaging. Fill your display's OPS slot with an on-board computer powered by Intel that brings you all the power of a desktop computer. No more worrying about cables or going through the steps of connecting a laptop or desktop directly to the display.

### Google EDLA Certified OPS Android Computer



Part Number	RK3588
CPU	Quad-core Cortex-A55
GPU	Mali-G52-2EE
Storage	64GB eMMC
RAM	8GB
Built-in WiFi	WiFi 6 2.4GHz + 5GHz
Bluetooth	Bluetooth 5.2
OS	Android 12
Ports	(1) USB 2.0, (1) USB 2.0 (OTG), (2) USB 3.0; (1) RJ45 Gigabit; (1) MIC-IN; (1) Micro SD

### Intel-Powered OPS



	Good 4K	Better 4K	Best 4K
Part Number	EPR8A65800-000	EPR8A64000-000	EPR8A67160-000
CPU	i5 12th Gen	i7 12th Gen	i7 12th Gen
GPU	Intel UHD Graphics	Intel UHD Graphics	Intel UHD Graphics
RAM	8GB DDR4	8GB DDR4	16GB DDR4
Hard Disk	128GB SSD	256GB SSD	256GB SSD
Built-in WiFi & Bluetooth	Wi-Fi 6 + BT 5.0	Wi-Fi 6 + BT 5.0	Wi-Fi 6 + BT 5.0
OS	Win 11 Pro (Win 10 Optional)	Win 11 Pro (Win 10 Optional)	Win 11 Pro (Win 10 Optional)
RAM Upgrades	Up to 32GB	Up to 32GB	Up to 32GB
Storage Upgrades	Up to 1TB SSD	Up to 1TB SSD	Up to 1TB SSD



# ACCESSORIES

## Solutions for your Interactive Display

Your schools are made up of more than just classrooms. There are also offices, libraries, and speciality rooms that can benefit from interactive displays. Support all the needs on your school campuses with reliable accessories that support Newline's innovative designs. Mount your panel to a wall or choose a more mobile mounting solution.

### newline

#### Wall Mount

- ✓ Keep your display sturdy on the wall with the standard Newline wall mount.
- ✓ The light, compact design makes it easy to install while providing strength and durability.



SKU: EPR8A50600-000

\*Fits 55" - 80" Panels

\*Fits 80" - 98" Panels  
SKU: EPR8A50980-000

### newline

#### Mobile Stand

- ✓ Adjust the height of your display so that your students can touch and interact directly with the screen.



\*Fits all Panel Sizes  
SKU: EPR8A50500-SQR\*

### newline

#### TRULIFT Mobile Stand

- ✓ Motorized stands let you adjust your display height with a remote or electronic option, giving you easy visibility.



\*Fits all Panel Sizes  
SKU: EPR8A60060-000\*

Newline partners with a variety of different mobile stand and wall mount providers to help you find the best fit for your needs.

### BalanceBox®

#### Wall Mount

SKU: EPR8A88700-000

\*Fits 55" - 80" Panels

SKU: EPR8A88900-000

\*Fits 80" - 98" Panels

### MOORECO™

#### iTeach Stand

SKU: EPR8A70080-000\*

\*Fits all Panel Sizes

### MOORECO™

#### iTeach Motorized Stand

SKU: EPR8A70070-000\*

\*Fits all Panel Sizes

### BalanceBox®

#### Mobile Stand

SKU: EPR8A88555-000®

SKU: EPR8A88666-000†

# SOFTWARE SOLUTIONS

## Software to Transform How You Teach

Newline Interactive software completes the ecosystem and gives faculty more ways to connect with their students and manage their technology.

Built for the modern campus, these solutions allow you to connect with students no matter where they are. Wirelessly cast mobile screens to the display, broadcast content to everyone's devices, whiteboard and collaborate with students in real-time, apply mass notifications and centrally manage all of the displays on your network.

With Newline as the edtech hub of every classroom, all of your lessons are raised to a higher level of communication and student engagement.

All Newline Software Solutions are compatible with:



### SIGNAGE PRO



#### Effortless Digital Signage

- ✓ Comprehensive online admin portal
- ✓ Streamlined registration process and device grouping
- ✓ Simple Scheduling & auto launch features
- ✓ Versatile pre-defined layouts with user-friendly content and text creation
- ✓ Rich content support with live feed integration
- ✓ Google Slides, Google Calendar & Canva integration
- ✓ Fully Integrated with Q Pro & STV+

### SECURE



#### Real-Time Emergency Notifications

- ✓ Receive CAP messages from 3rd party platforms
- ✓ Customizable subjects, descriptions, and backgrounds
- ✓ Google & Microsoft Single-Sign-On support
- ✓ Bulk register displays with Zero Touch Enrollment
- ✓ Choose where to send alerts with Group Management
- ✓ View history of alerts with Alert Auditing Log
- ✓ Integrates with Singlewire, Centegix and more



## ENGAGE CLOUD



Google for Education  
Partner

### Cloud-Based Whiteboarding

- ✓ Online, cloud-based interactive whiteboard for remote, hybrid and in-person instructional sessions.
- ✓ Classroom controls include hundreds of subject-specific manipulatives and widgets like timers, polls, clocks, grids, handwriting recognition and more.
- ✓ Device agnostic, Newline Engage Cloud works on Newline panels as well as tablets, Chromebooks, mobile phones, and more.

## VISUAL COMMUNICATION SOLUTION



### Digital Signage

- ✓ Newline Visual Communication Solutions powered by TSN is a digital broadcast network designed to provide unified visual communications on campuses.
- ✓ Broadcast important and engaging messages to staff, students, and the community directly through a Newline panel without the need for a separate media player.
- ✓ Leverage your Newline display for all your digital signage and visual communication needs.

## LAUNCH CONTROL



### All-In-One Meeting Solution

- ✓ Walk up and start your meetings with a one-touch solution that keeps your computer and network secure.
- ✓ Easily access approved apps, view the room's calendar, and start a videoconferencing call - all with one button!

Launch Control supports:



## DISPLAY MANAGEMENT PLUS



### Remote Management

- ✓ Centrally manage your Newline interactive displays from any location through a secure and dedicated web portal.
- ✓ Easily manage and deploy learning apps and configure Newline display settings.
- ✓ Quickly update firmware and power usage across campuses.

## CAST



### Wireless Screen Sharing

- ✓ Easily share your screen from any device.
- ✓ Newline Cast is simple to use, with one click you can teach wirelessly on any network.
- ✓ Control and annotate your screen from the Newline display or from your own device.
- ✓ Activate moderator mode and cast up to 4 screens simultaneously.

## BROADCAST



### Content Sharing

- ✓ Tap one button and share your display screen with students who may not be able to see the display clearly.
- ✓ They can follow along on their own personal screen.
- ✓ Writing and page navigation is reflected on all devices.
- ✓ Connect from anywhere, even outside of the display's network.
- ✓ Perfect for the Hyflex model







# OUR SERVICE GUARANTEE

Newline's commitment to quality and your school's success extends past the initial purchase. We provide lifetime service, free training, and world-class technical support as well as a best-in-class warranty.



## On Demand Technical Support

Newline provides continuous U.S. based technical phone support, email support through our Helpdesk Ticket System, and remote desktop support. You will always have access to answers at our online support knowledgebase. Proactively find answers, any time, with our completely comprehensive self-help system.



## Training Geared for Ease of Use

Protect your technology investment through free training for all teachers and staff. Newline provides quality instructional training opportunities for all staff. The easier our display is for your team to use effectively, the more you can succeed. Newline's resources also include custom training emails to staff, PD training, and more.



## Advanced Replacement Warranty

Newline has one of the best warranty programs in the industry. Not only do we provide 3-years of coverage, but it is an all inclusive advanced replacement warranty. That way your progress and productivity is not affected by technology defects.



## On Demand Training

Want to give your staff the flexibility they need for training? Newline offers on demand training for all of our customers. Each user gets their own account and may choose which content they want to learn. Our videos are no longer than 5 minutes each.

# OUR PARTNERSHIPS

Newline is committed to providing the best user experience possible, which includes partnering with the best technology companies. We are proud to sell innovative products that incorporate their expertise to make interactivity easier than ever!



## **A Partnership for Education**

Newline is proud to be named a Google for Education Partner, leveraging the Newline Engage Cloud software with Google Cloud to deliver collaboration solutions for businesses and schools.



## **Powerful On-Board Computers**

Newline's OPS On-Board Computers come with powerful Intel processors, providing customers with an all-in-one computing solution.



## **A Bundle for the Virtual World**

Microsoft Windows Whiteboard leverages the power of touch to bring lessons and whiteboarding sessions to life.







Logitech provides camera and microphone options that easily integrate with all of Newline's touch solutions.



Newline and Crestron have teamed up to bring you the complete solution for your interactive displays.



Clickshare is an agnostic meeting solution for starting video calls from your laptop, working with all UC clients.



Adjust your Newline display with BalanceBox's options for wall mounts and mobile stands, some even motorized.



The versatile, configurable and durable Anywhere Cart mobile stands provide high quality classroom solutions. Fits up to 86" Newline displays.



Enhance your Newline interactive touch display with a versatile Mooreco mobile cart solution to provide you mobility.



Provide financing solutions to your Newline customers through TEQlease, giving additional purchasing options.

## MERLYN MIND

Merlyn Mind's in-classroom generative AI chat rewards student curiosity, encourages higher-order thinking, and makes students excited about learning.



The leader in Visual Communication for schools & districts, higher education, and businesses, TSN helps connect your organization through visual communication and engagement.



Coirle provides teachers with an intuitive platform to use, create, share, and deliver dynamic, interactive activities that will engage, motivate, and inspire students.



Legrand | AV offers audiovisual products including flat panel mounting solutions, projector mounts and more to Commercial AV markets.



Peerless-AV provides industry leading fixed mount and mobile stand solutions designed to improve your Newline experience.

## DisplayNote

DisplayNote is a leading technology company that creates intelligent collaboration solutions for education and enterprise.



# FROM OUR CUSTOMERS



**Mark Baratta**

*Director*

*Computing*

*University of Washington*

"People here have found the X7 to be very easy to use—so easy that they often do not need assistance from local technical support. This of course means that those of us doing technical support like the X7 a lot!"



**Kelly McClure**

*Director*

*Information Technology Services*

*Eifler Advisory Group*

"What Newline does for us is simplify the footprint for instructional technology. I can have one device and that one device does everything that I need. If you're looking to create a smaller footprint in your instructional technology platform, then Newline is absolutely the way to go."



**Tim Salm**

*Director*

*Robinson Memorial Library*

*Saint Joseph's College*

"In a generation that has grown up with the iPhone and touchscreen technologies, the Newline interactive touchscreen makes sense to students and they respond positively (and intuitively) to it."



**Chris Severson**

*Executive Dean*

*Education Services*

*Mid-State Technical College*

"Mid-State Technical College is pleased with this product and partnership with Newline. We look forward to growing our relationship and seeing the future possibilities from the company."





# Technologies That Will Change Future

## ARTIFICIAL INTELLIGENCE

Artificial intelligence, or AI, and machine learning refer to the ability of machines to learn and act intelligently, meaning they can make decisions, carry out tasks, and even predict future outcomes based on what they learn from data. AI and machine learning already play a bigger role in our lives than you might imagine.

PROUDLY SERVING COLLEGES &  
UNIVERSITIES COAST TO COAST:



# OUR AWARDS

Each year, Newline shatters it's goals and gets recognized for it. Trust a brand that consistently receives accolades from industry experts on innovative design, relevant product features, and company growth.



Entrepreneur of the Year  
Finalists



InfoComm 2015  
Hot 50 Product



CBS Eye on  
Technology Appearance

2015



Best New Interactive Flat  
Panel - ISE



InfoComm 2016  
Best in Show



Entrepreneur of the Year  
Finalists



Best Office Technology  
Product Finalist



Top  
FastTechCompanies  
TechTitans

#1 Fast Tech  
Company



AV Awards 2016  
Finalist

2016



InfoComm 2017  
Best in Show



Entrepreneur of the Year  
Finalists



AV Awards 2017  
Finalist



Top 5  
Fast Tech Companies



#10 of the  
Dallas 100



Ranked #149 in  
2017 Inc. 500

2017



AV Awards 2018  
Finalist



Top 5  
Fast Tech Companies



Ranked #293 in  
2018 Inc. 500



#6 of the  
Dallas 100



Ranked #81 of the  
Deloitte Fast 500

2018



TCEA 2019  
Best of Show



Intel IoT Solutions Alliance  
Partner of the Year



Entrepreneur of the Year  
Finalists



EdTech Cool Tool  
Awards Finalist



#377 Growjo Fastest  
Growing TX Companies



Ranked #406 in  
2019 Inc. 500



Ranked #114 of the  
Deloitte Fast 500

2019





## Stability

With a steady financial revenue growth, you don't have to worry that the company you're working with will go out of business anytime soon. They'll be able to continue honoring warranties and providing you service for years to come.



## Security

A proven track record of success means you don't have to worry about receiving anything less than the best. An Inc. 500 ranked company will make sure you are taken care of and satisfied.

2020



Ranked #1088 in  
2020 Inc. 5000



Ranked #18 in the  
Dallas Middle Market 50



Ranked #266 of the  
Deloitte Fast 500



#15 of the  
Dallas 100



AV Awards 2020  
Finalist

2021



iF Design  
Award 2021



EdTech Cool Tool  
Awards Finalist



Red Dot Award  
Product Design 2021



Ranked #1963 in  
2021 Inc. 5000



Best Innovation for the  
Post-COVID Workspace



Ranked #480 of the  
Deloitte Fast 500



#18 of the  
Dallas 100

2022



EdTech Cool Tool  
Awards Finalist



Ranked #1577 in  
2022 Inc. 5000



Secondary Education  
Winner - Q Series



#6 of the  
Dallas 100



Tech Titans  
Fast Tech Company

2023



Entrepreneur of the Year  
Southwest Finalists



Entrepreneur of the Year  
Southwest Winners



Entrepreneur of the Year  
National Finalists



#11 of the  
Dallas 100



Ranked #12 in the  
Dallas Middle Market 50



Ranked #2312 in  
2023 Inc. 5000



Ranked #489 of the  
Deloitte Fast 500

2024



Ranked #2844 in  
2024 Inc. 5000



# newline

CONNECT. CREATE. COLLABORATE.

950 W Bethany Drive

Suite 330

Allen, TX 75013

[sales@newline-interactive.com](mailto:sales@newline-interactive.com)

[www.newline-interactive.com](http://www.newline-interactive.com)